

## Autumn Splendor

Color is very important in my designs. Focusing on these Mother of Pearl Leaf Beads, I've used Brown 6/0 & Taupe 11/0 Seed beads along with a pop of Red 15/0 beads to create a Herringbone Nature Inspired Necklace.

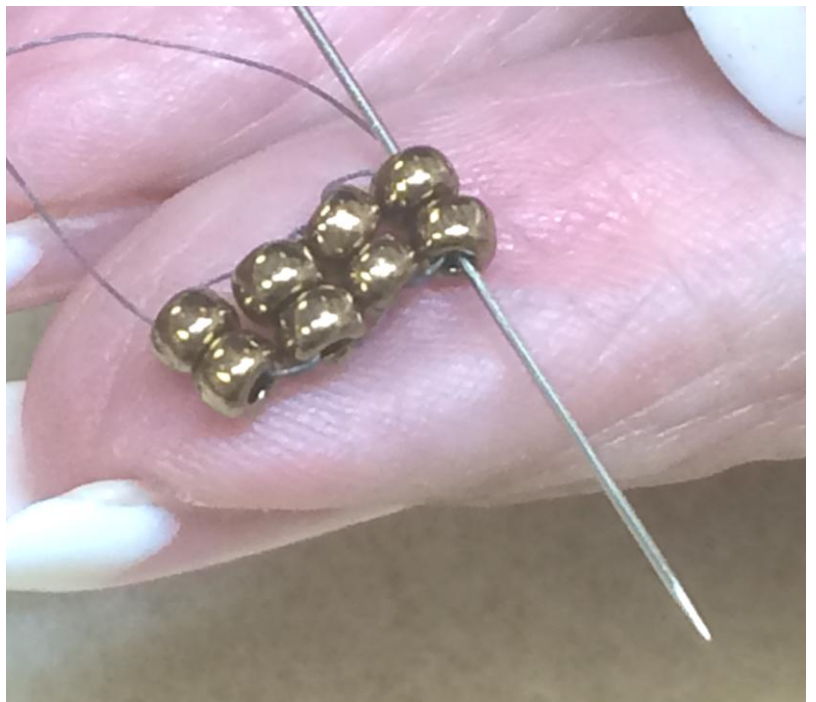
**Create 2 Ropes of Herringbone** with the size 6 brown beads. Each rope should be apx 10" long. Lengthen or shorten as you desire.

1. After threading your needle, pick up 4 Size 6/0 seed beads.
2. Sew back through the size 6/0 seed beads in the same direction as before to make a circle.
3. Separate the circle into 2 stacks of 2 beads each.



4. Add 2 size 6/0 seed beads. Sew back through the 2 beads in the first stack to make a circle. Pull the thread snug and sew through the beads you just added again. This should make 3 stacks of 2 beads each.

5. Repeat this step to make a total of 4 stacks.



6. Sew through the first stack again to join the ends together. Go back down through the last stack again to secure it to the first.



7. Pick up 2 size 6/0 seed beads. Sew down through the top bead on the next stack going in a clockwise direction. You will exit that stack between the two beads.
8. Sew over into the next stack & up & out of the top bead.
9. Pick up 2 size 6/0 beads & sew down onto the next stack to continue the herringbone cube. You will exit that stack between the two beads.
10. Repeat until you have your 10" long segment.
11. Close & reinforce the end by following the thread's path on the top beads without adding any more beads.
12. Create a second rope 10" long.



Next **Create the center flat Base** for the Leaves & Fringe so they don't turn wrong way or flop around.

*Back View:*

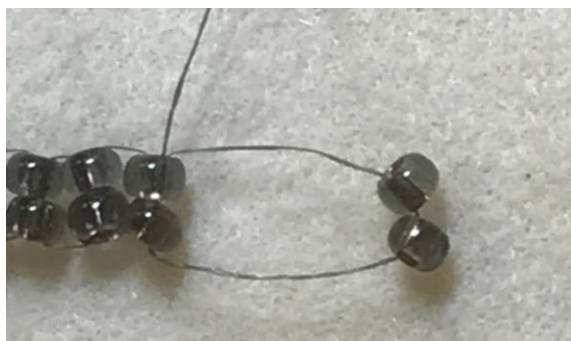


The base is made of 11 columns. Each Column is made up of 2 beads in a row.

13. Pick up 2 6/0 beads.
14. Sew down into your rope 2 beads from the end to make a circle. These are the first steps to a ladder stitch.



15. Pick up 2 more beads & sew down into the previous 2 beads in a circle to continue the ladder. Sew through the beads you just added to continue the circle.

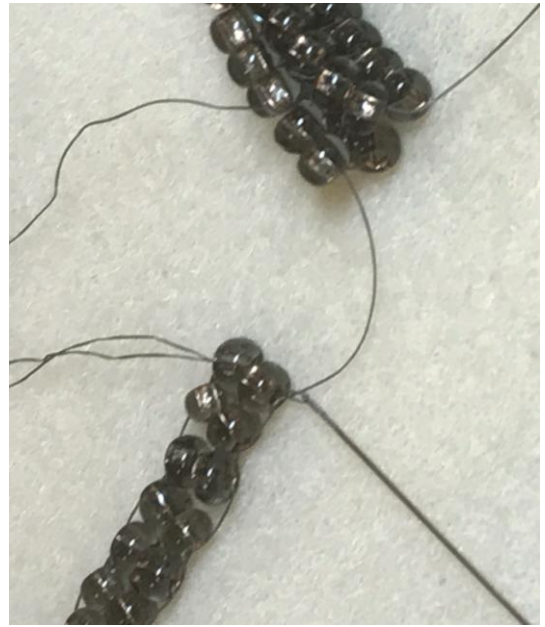


16. Repeat until you have ladder stitched 11 columns.

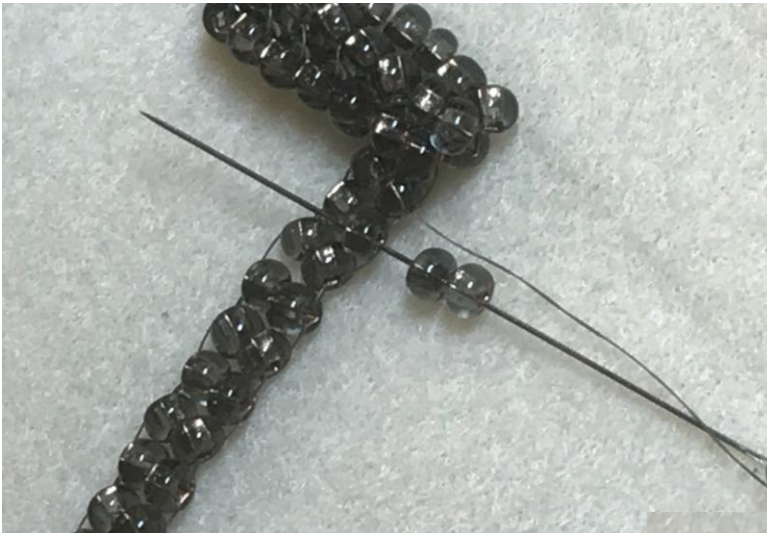


17. Connect to your other rope & reinforce by sewing through the last circle again.

18. Come out of the bottom of the last bead on the flat section. Sew around to get to that spot if needed.



19. You will sew in a flat herringbone on the way back: Pick up 2 beads. Sew up 1 in the next row over.

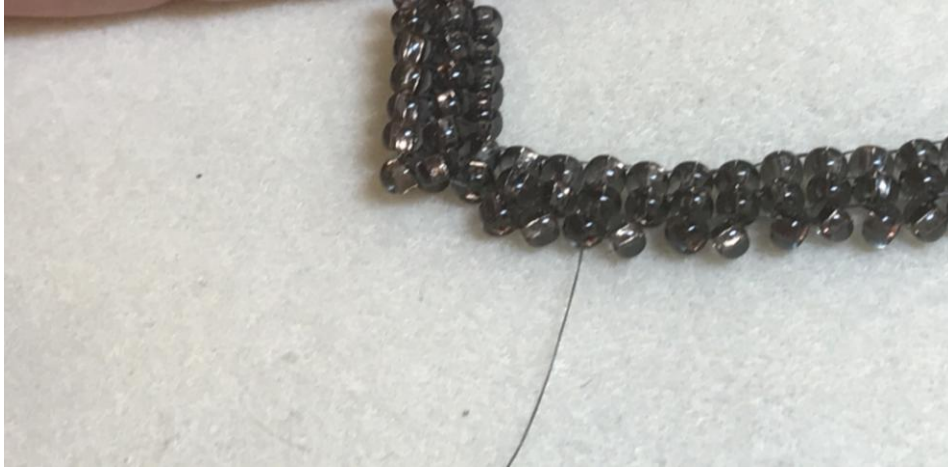


20. Go over to the next column & sew down.

21. Repeat until you get to the other side.



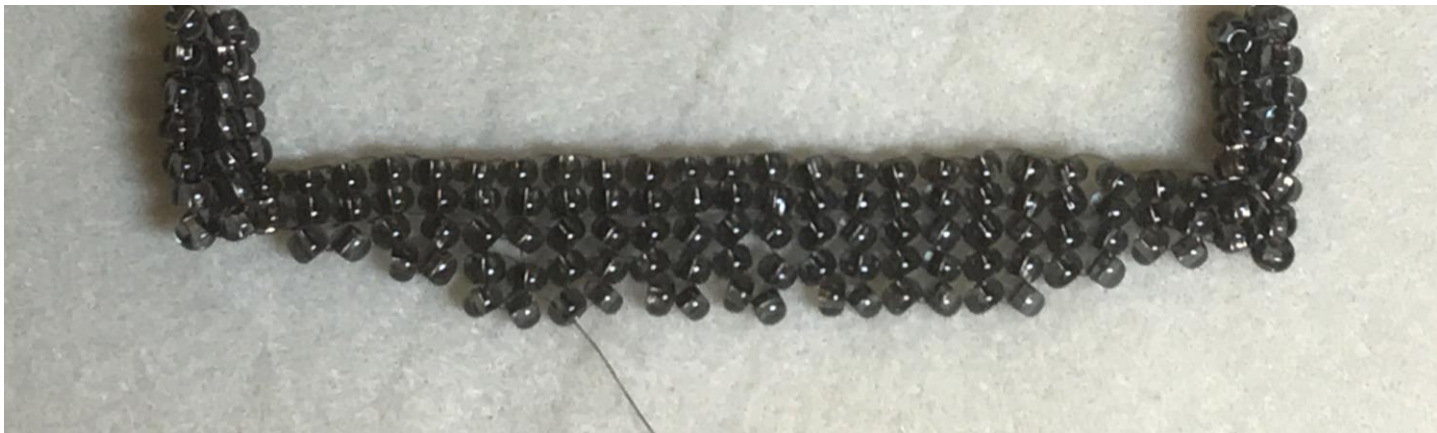
22. Repeat rows but decrease by 1 bead on each side each after this. To decrease, work around until you come out of the third bead in from the left.



23. Make a row with 9 Columns. (Remember each column has 2 beads)



24. Make row with 7 columns



25. Make row with 5 columns





26. Make row with 3 columns



27. Make row with 1 column.



- The reason you are using this stitch is so your bead holes will go North & South so you can hang your fringe.

28. End with a Picot. Pick up 3 beads, sew into the next column all the way to the top.



29. Sew down 1 bead in the next column over.

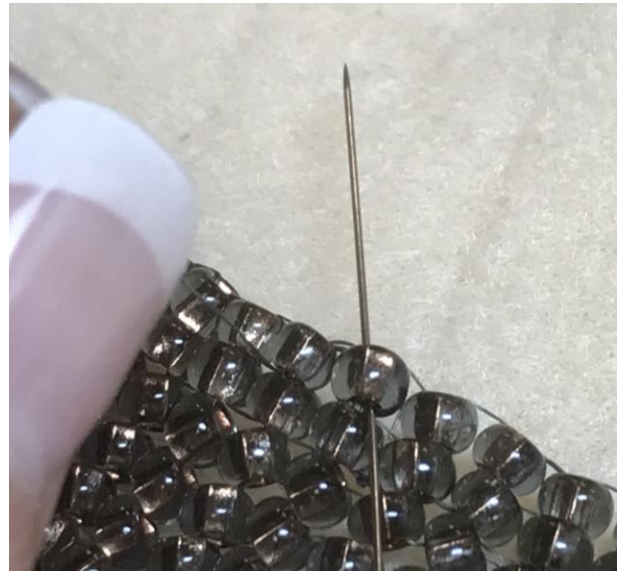


30. Pick up 1 size 11/0 bead, 1 Leaf & 1 Size 11/0 bead.





31. Sew up a bead in the first row.



32. Sew through the same thread path to reinforce.



Lay out design and sew beads on where you want.





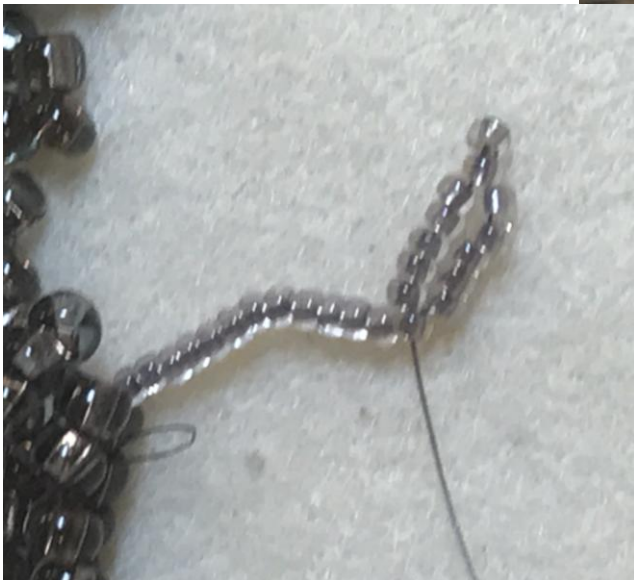
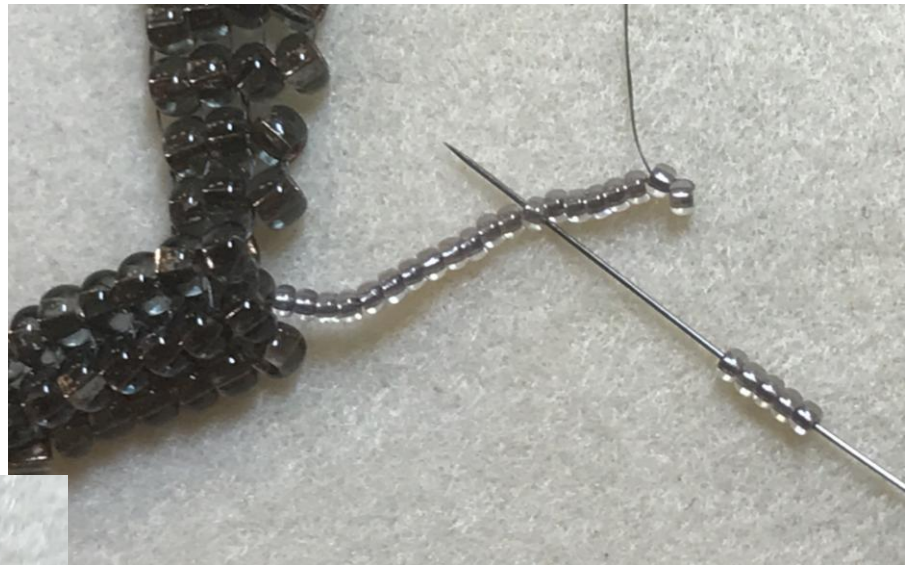
The next step is to **Add the Leaf Fringe:**

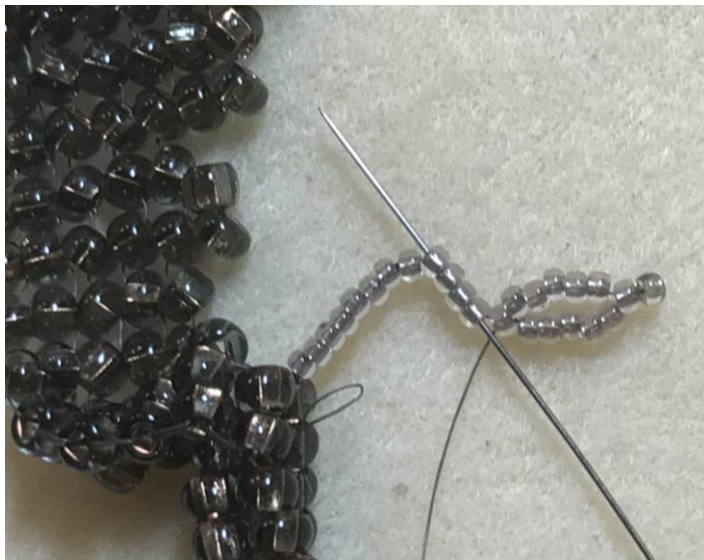
This process is very organic. You will make this the length you want. I'll give you the number I used for reference. Add something unexpected! The red 15/0s do that.



33. Pick up as many 11/0s as you want for the length. I did 15.
34. Pick up an odd number to make the "leaf" (7).
35. Go back up into the 2<sup>nd</sup> bead from the bottom.

36. Pick up 5 beads.
37. Skip over 5 beads going back up.
38. Sew into the 6<sup>th</sup> & pull up the slack in the thread to make the "leaf".

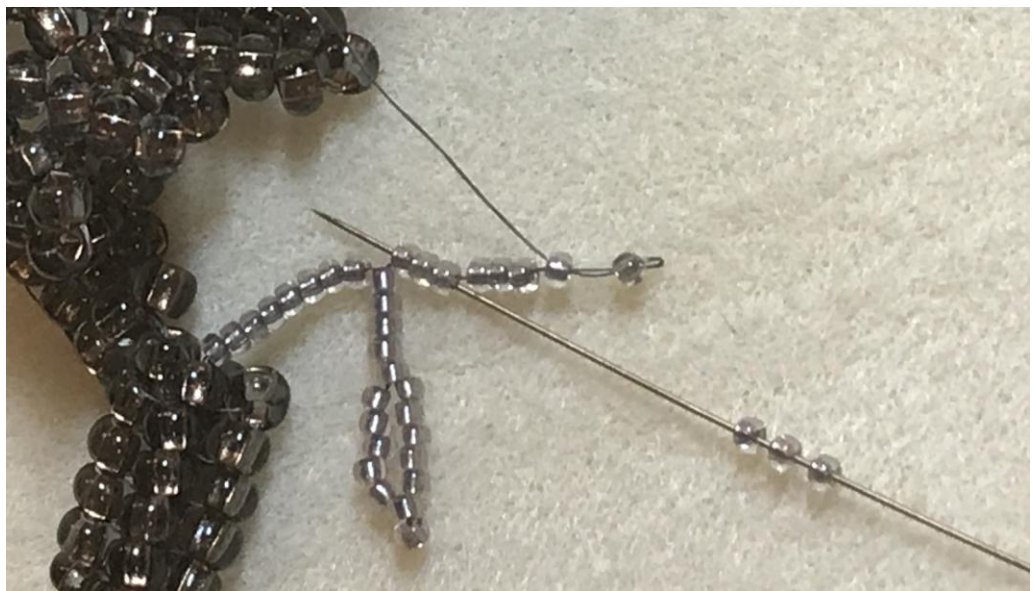




39. Sew back up 3 or 4 more beads.

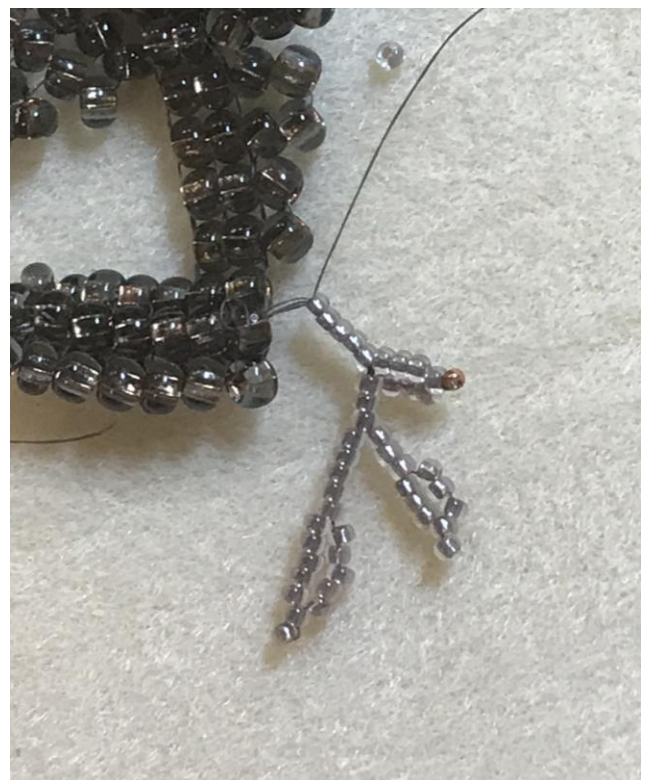
40. Pick up 3 beads for the next stem.

41. Make another Leaf.



Make as many of these as you like  
Add 15s in red occasionally for visual interest.

Repeat to add across the top & few long ones on the bottom.







Add a bit next to the clasp!



- Ann Page 2017