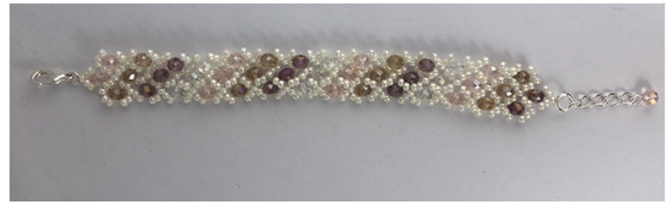


Crystal Bracelet

You will need:

- (1) Clasp
- (1) 1" Extender Chain
- (2) Jump Rings
- (1) Headpin
- Approx. 160" Monofilament Cord
- (12) 6mm Champagne Crystal Beads
- (9) 6mm Purple Crystal Beads
- (12) 6mm Pink Crystal Beads
- (9) 6mm White Crystal Beads
- (300) 3mm White Seed Beads
- Round Nose Pliers and Cutters



Using the Monofilament cord thread on (2) white seed beads then (1) colored crystal bead and (2) more white seed beads. Repeat this pattern alternating the colored crystal beads. Use the above image for color reference.



From one end, fix the monofilament cord.



Add (2) seed beads around the first crystal.



Add (2) seed beads around the second crystal (creating an "S" shape around the two crystals) Continue this "S" pattern to the bottom.



Reverse the pattern back up the strand to complete the flower pattern.



Add the seed beads and crystal to weave the second and third flower strand (one on each side) repeating the same steps as above. The ends will form a "V". Weave through your last bead and knot. Secure with a drop of glue.



On one end connect the extender chain and the other end connect the clasp.



Using the headpin add one pink crystal bead and create slightly open circle and connect to the end of the extender chain.

Enjoy!