



Knock Three Times

Pattern and instructions by Gail DeLuca

Three drop Peyote stitch with embellishments and a special clasp finish.

Refer to my blog post on the Fundamentals <http://www.whitefoxbeads.com/bead-weaving-fundamentals-essential-stuff-for-successful-stitching/> for information on adding thread, and more.

Tools and supplies

- Size 8 Seed Beads Color A (8A)
- Size 8 Seed Beads Color B (8B)
- Size 11 Seed Beads
- Tri beads
- O beads Color A (OA)
- O beads Color B (OB)
- Beading thread - Fireline 6lb
- Beading needles, size 10
- Bead slide clasp, 24mm
- Bead blanket or other work surface
- Scissors
- Chain nose pliers

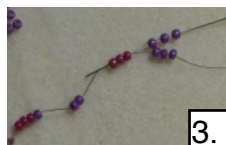
Three drop peyote stitch is worked like regular flat peyote stitch, but you will pick up three beads with each stitch.

Gail DeLuca • www.whitefoxbeads.com • White Fox Beads

Copyright 2017. This project is an original design, and these instructions were carefully and thoughtfully written for your learning and enjoyment of the techniques presented. While we encourage sharing of techniques, copying or distribution of this document or any portion of it is not playing nice and just happens to also be against the law without written permission of White Fox Beads. You are welcome to make and sell completed projects using this pattern.

Stitch the base with 3 drop peyote stitch

1. Thread a needle with about 4-6 feet of thread, whatever you are comfortable working with. Add a stop bead about 6" from tail end of thread.
2. String three 8a, three 8b, three 8a, and three 8b and slide down to stop bead. (in these photos, 8a is pink and 8b is purple.)



3.



3.

3. String three 8b and stitch through three 8a. Repeat.



4.



4.

4. String three 8a and stitch through three 8b. Repeat.



5.



5.

5. String three 8a and stitch through three 8a. Repeat.



6.



6.

6. String three 8b and stitch through three 8a. Repeat.



7.



7.

7. String three 8a and stitch through three 8b. Repeat.

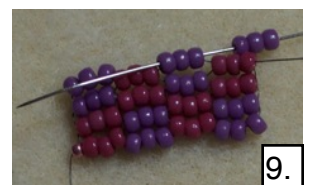


8.

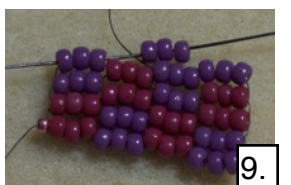


8.

8. String three 8b and stitch through three 8a. Repeat.



9.

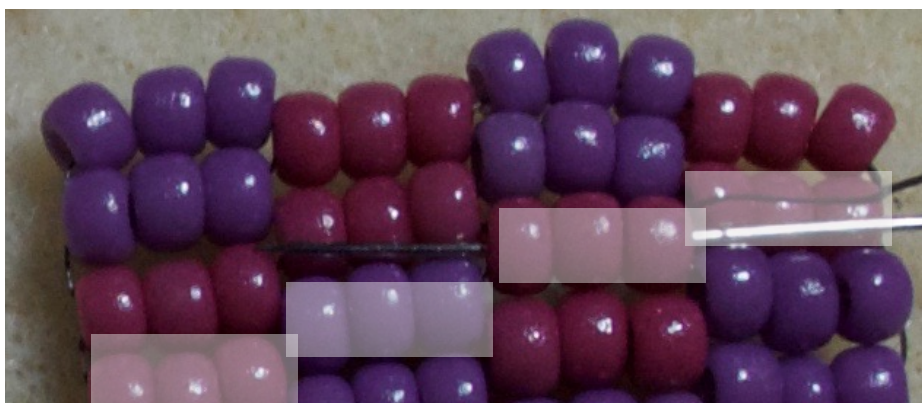


9.

9. String three 8b and stitch through three 8b. Repeat.

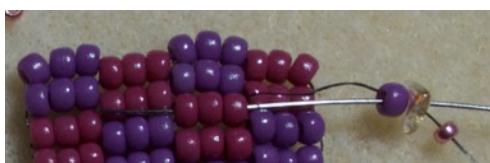
Repeat steps 6 through 9 until you reach the desired length, ending with a step 8. Remove stop bead.

Add the embellishments.

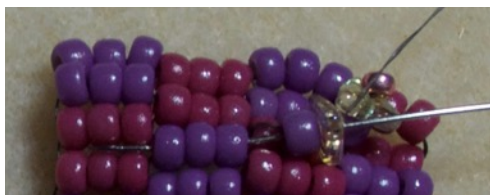


Note: As you add each row of embellishment beads, you should be working diagonally from one set of three 8 beads to the next, as shown in the photo (left.)

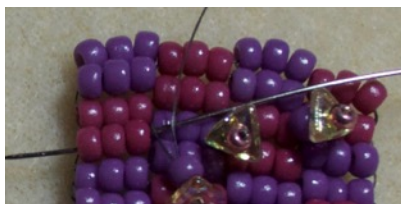
If you have ended with a step 8, your thread should be exiting three 8a beads. Take a stitch through the next three 8a beads.



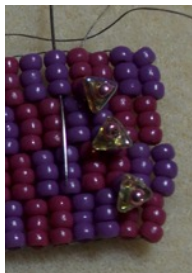
10. String an 8b, a tri-bead, an 11, and stitch back through the tri-bead and the 8b. Stitch through the next three 8a beads, pulling the thread snug.



11. String an 8b, a tri-bead, an 11, and stitch back through the tri-bead and the 8b. Stitch through the next three 8b beads, pulling the thread snug.



12. String an 8b, a tri-bead, an 11, and stitch back through the tri-bead and the 8b. Stitch through the next three 8a beads (follow the diagonal path shown at the top of the page) pulling the thread snug.



13. Take a stitch into the next set of three beads to get ready to add the next row of embellishments



14. Add a row of embellishments in a similar manner, stringing an OA, an 11 and stitching back through the OA. This row will sit closer to the beadwork base.

15. Add another row of embellishments as in step 10-13, working the next row down. Keep each row of embellishments you add on a diagonal.

16. Add another row of embellishments as in step 14, **this time using an OB.**

17. Continue with the embellishment rows, alternating rows as follows, to fill up the length of the bracelet:

- Tri-Bead row
- O bead row, with O bead A
- Tri-Bead row
- O bead row, with O bead B

As you work, the rows with the O beads will tuck slightly under the rows with the tri-beads.

Add the clasp:

Slide the Beadslide clasp over the size 8 beads along the edge. Since this is peyote stitch, you will need to ease all the beads into the clasp with some effort.



After inserting the beads into the clasp, reinforce by stitching the beads within the clasp to the adjacent rows, stitching several times through all these beads.



Use a pair of chain nose pliers to bend the “wings” of the clasp around the beads within it.

Repeat for both ends of the bracelet, making sure the clasp is facing the right direction so it will close properly.

Gail DeLuca • www.whitefoxbeads.com • White Fox Beads

Copyright 2017. This project is an original design, and these instructions were carefully and thoughtfully written for your learning and enjoyment of the techniques presented. While we encourage sharing of techniques, copying or distribution of this document or any portion of it is not playing nice and just happens to also be against the law without written permission of White Fox Beads. You are welcome to make and sell completed projects using this pattern.