

Supplies:

Peanut or Farfalle Beads

Pearls

Fireline -8lb Size

#10 Beading Needle

Scissors or Thread Zap

Bead Mat



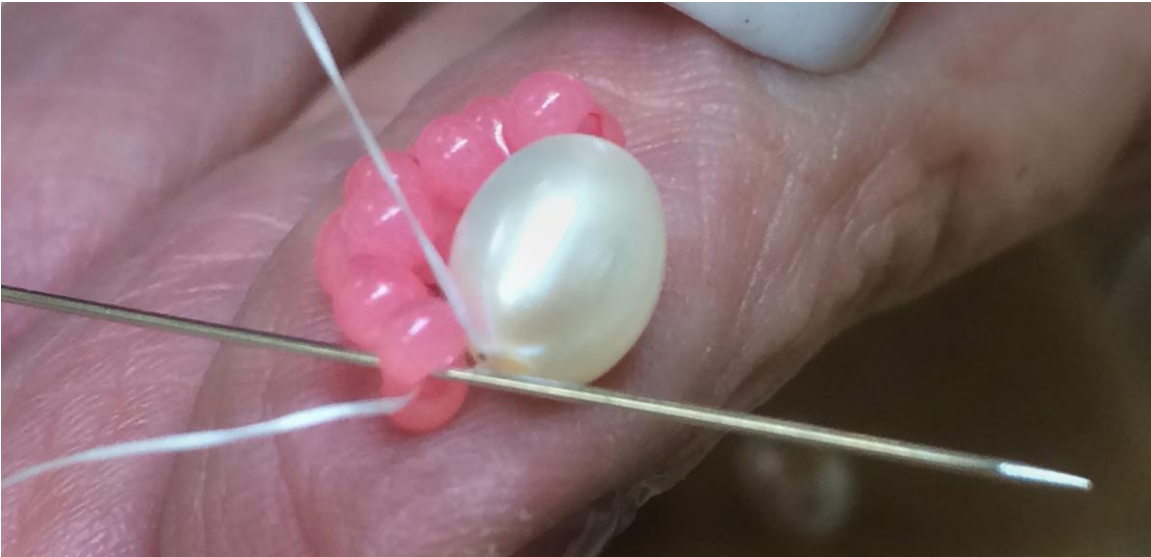
1. After threading your needle, pick up 7 Peanut beads on your needle then pick up 1 pearl. Test to make sure that 7 peanuts fit around half of your pearl. Leave 6" of a tail on the thread.



2. Run your needle back through the same path as before. Go through the peanuts and come out of the pearl.



3. Sew through the first peanut again.



4. Pick up 7 more Peanut beads. Complete the circle around the pearl by then sewing through the first peanut and pulling the thread snug.



5. For added strength, you can sew around the circle again.



6. To make the connecting link, pick up 3 peanut beads and sew through the first peanut you came out of going the same direction. Do not change direction.



7. Pull the thread snug.

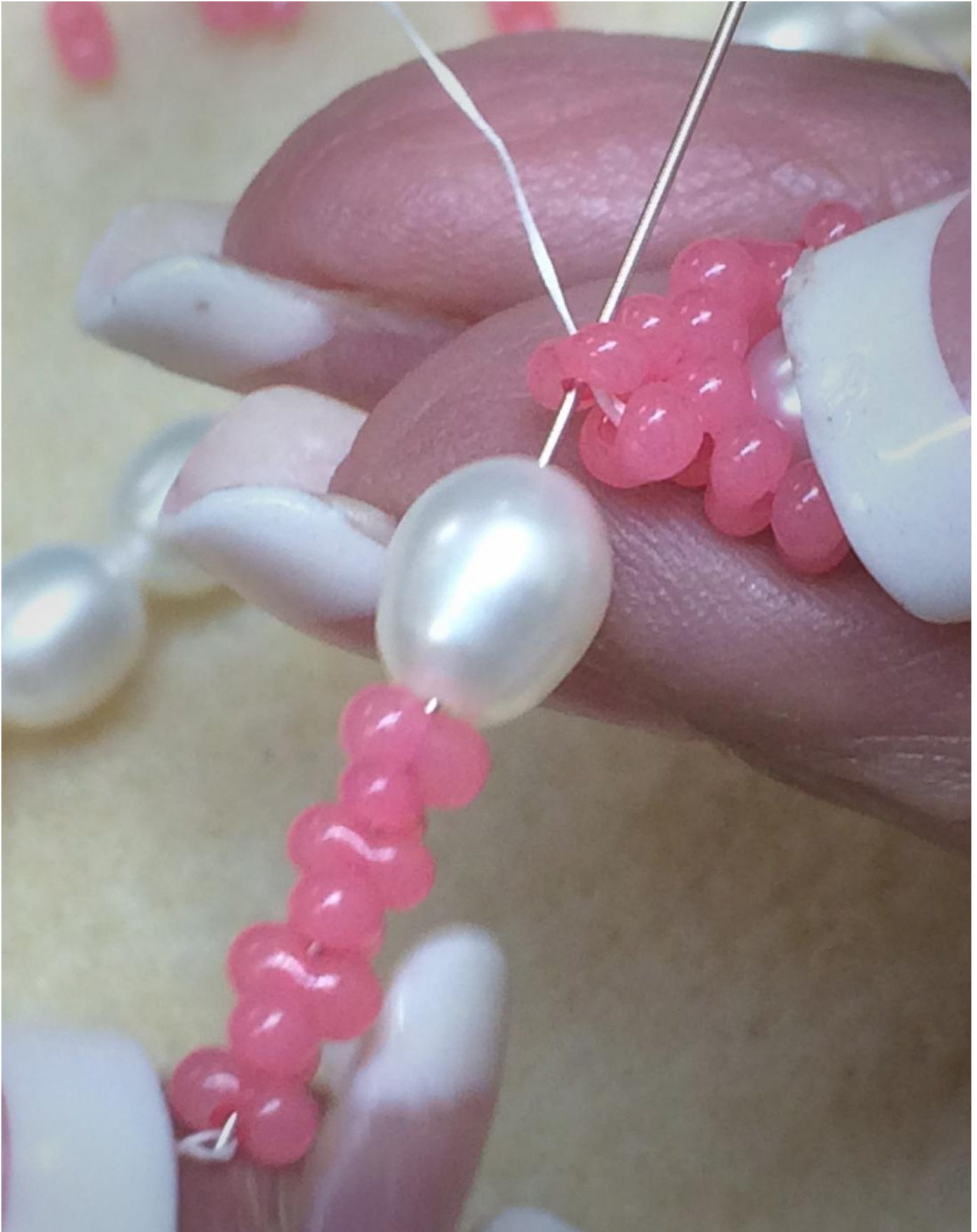


8. Sew through the next 2 peanuts in the connecting link.

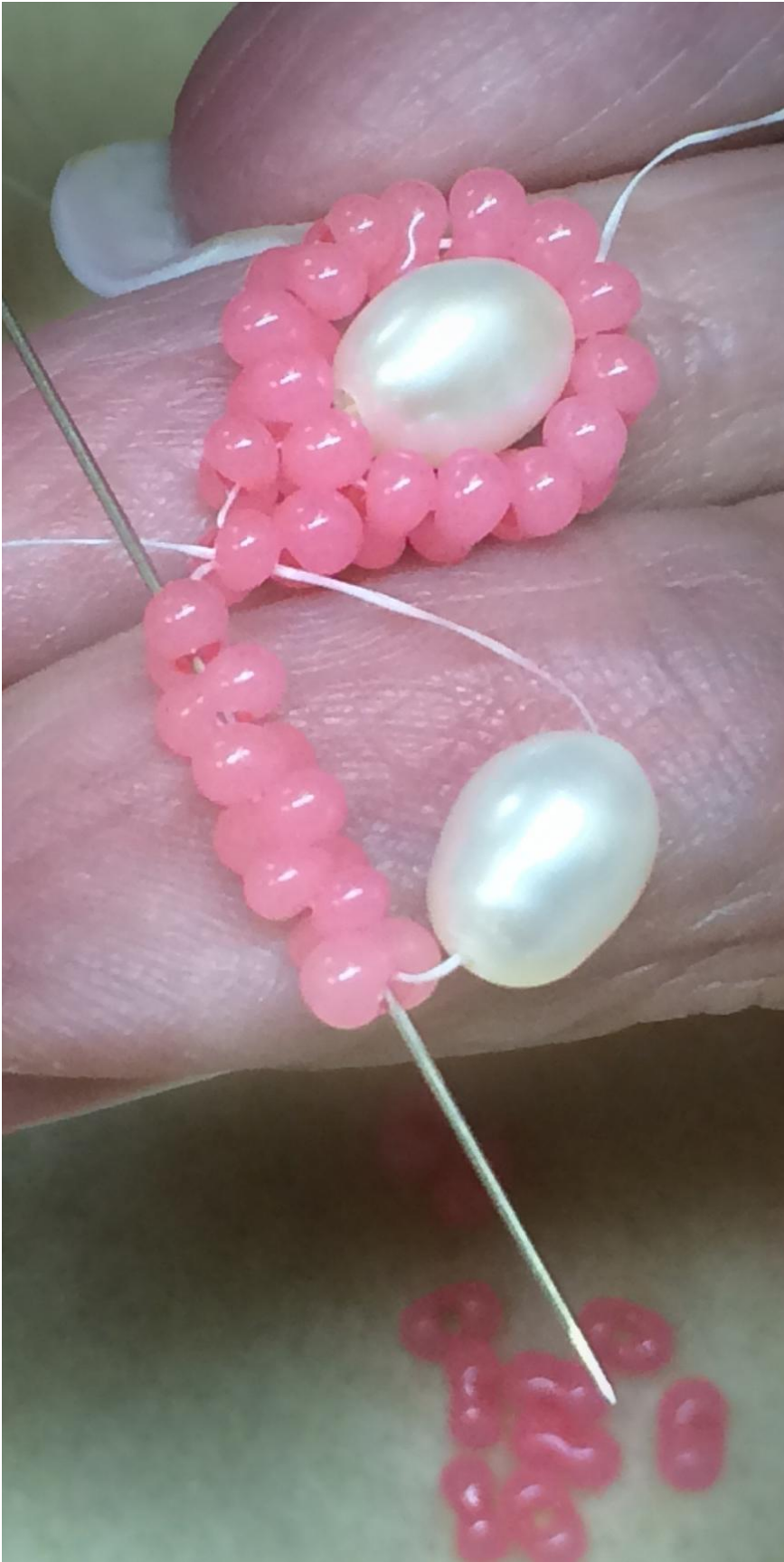


This completes one link and sets the design up for the next link.

9. Pick up 7 peanut beads and one pearl.
10. Sew through the first peanut again.



11. Sew back through the 7 peanuts and the pearl again.



12. Pick up 7 more peanuts to complete the circle.



13. Sew through the first peanut in this link again & down through the pearl.



14. Sew through the peanuts again and come out of the first peanut in this link.

15. Repeat steps 6-8 to create the next connecting link.



16. Repeat to make the length you want then sew on your favorite clasp. This design works beautifully as a bracelet or necklace.

