

Supplies:

Cabochon or Focal Bead
 11/0 Seed Beads
 Accent Gem Beads
 Embroidery Backing
 Ultra Suede
 Fabric Glue
 Solid Ring for Bail
 Fireline -8lb Size
 #10 Beading Needle
 Scissors or Thread Zap
 Bead Mat



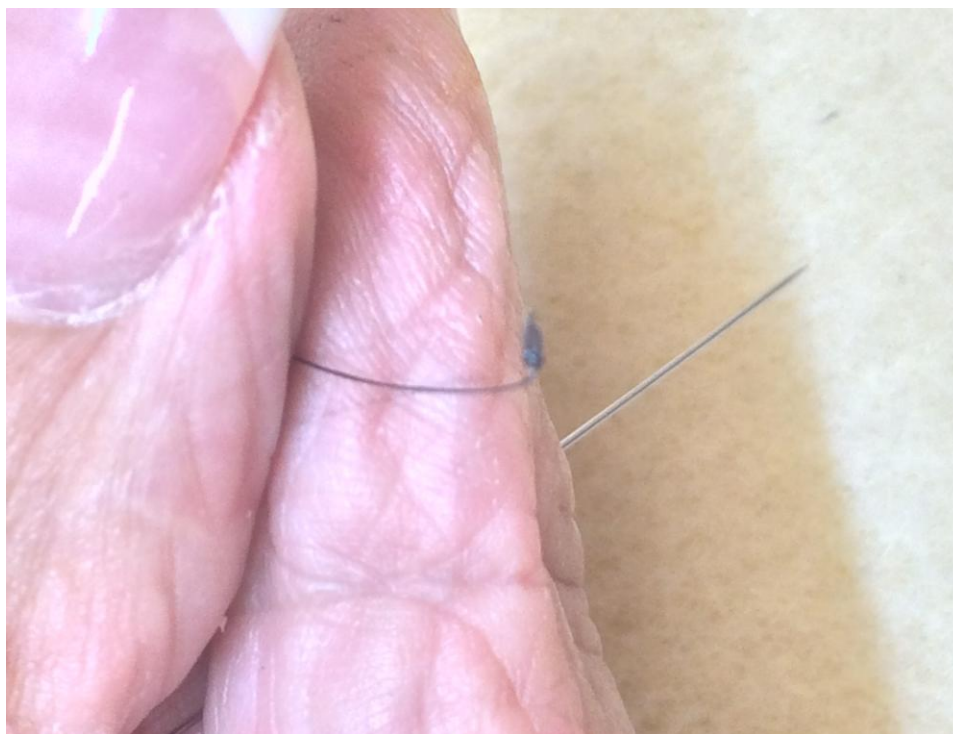
1. Lay out your cabochon focal onto a piece of your embroidery backing. You can use more than 1 cab. Once your stones are arranged, glue them in place with fabric glue.



2. Place a napkin over your stones to protect them and place something with a little weight on top to hold them down while the glue dries. Set them aside in a safe place. You can create your beaded rope while you wait.



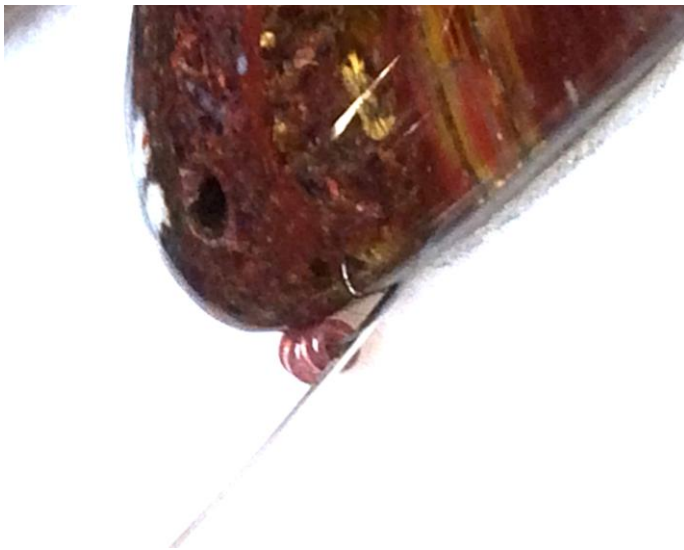
3. After the glue dries you are ready to start beading. Cut a comfortable length of beading thread and tie a knot in the end.



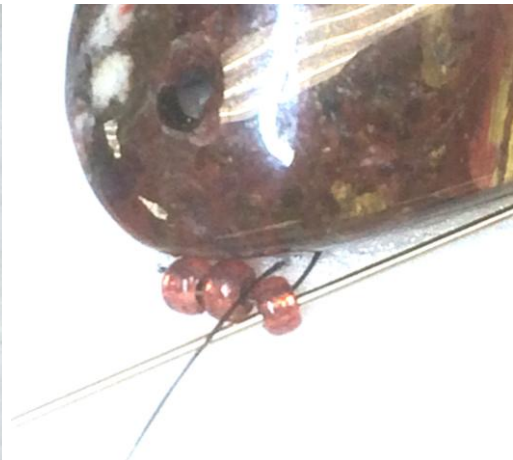
4. Sew up through the backing next to one of your cabochons.



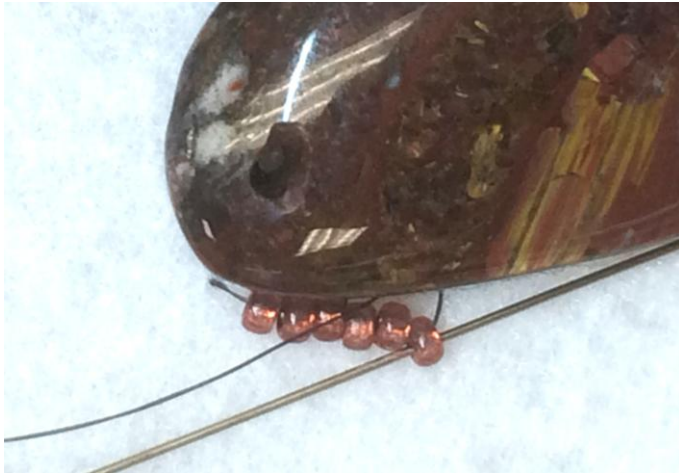
5. String 3 size 11/0 seed beads. Lay them next to your cabochon and sew down through the backing at the end of the line.



6. Sew back up through the backing. Come through approximately 1 bead back from the end. Sew through that bead going the same way so the thread comes out of the end bead again.



7. Repeat this process until you get all of the way around your cabochon.



8. When you get near the end, add only as many beads as you need to fill the last gap. Instead of sewing down, sew into the first line you added. Continue sewing around the entire line of beads to reinforce the structure.



9. To start the peyote stitch bezel, sew on 1 size 11/0 seed bead. It will sit on top of the row you just finished. Skip the bead it will sit on and sew through the next bead in the first row.



10. Repeat this pattern all the way around the cabochon.



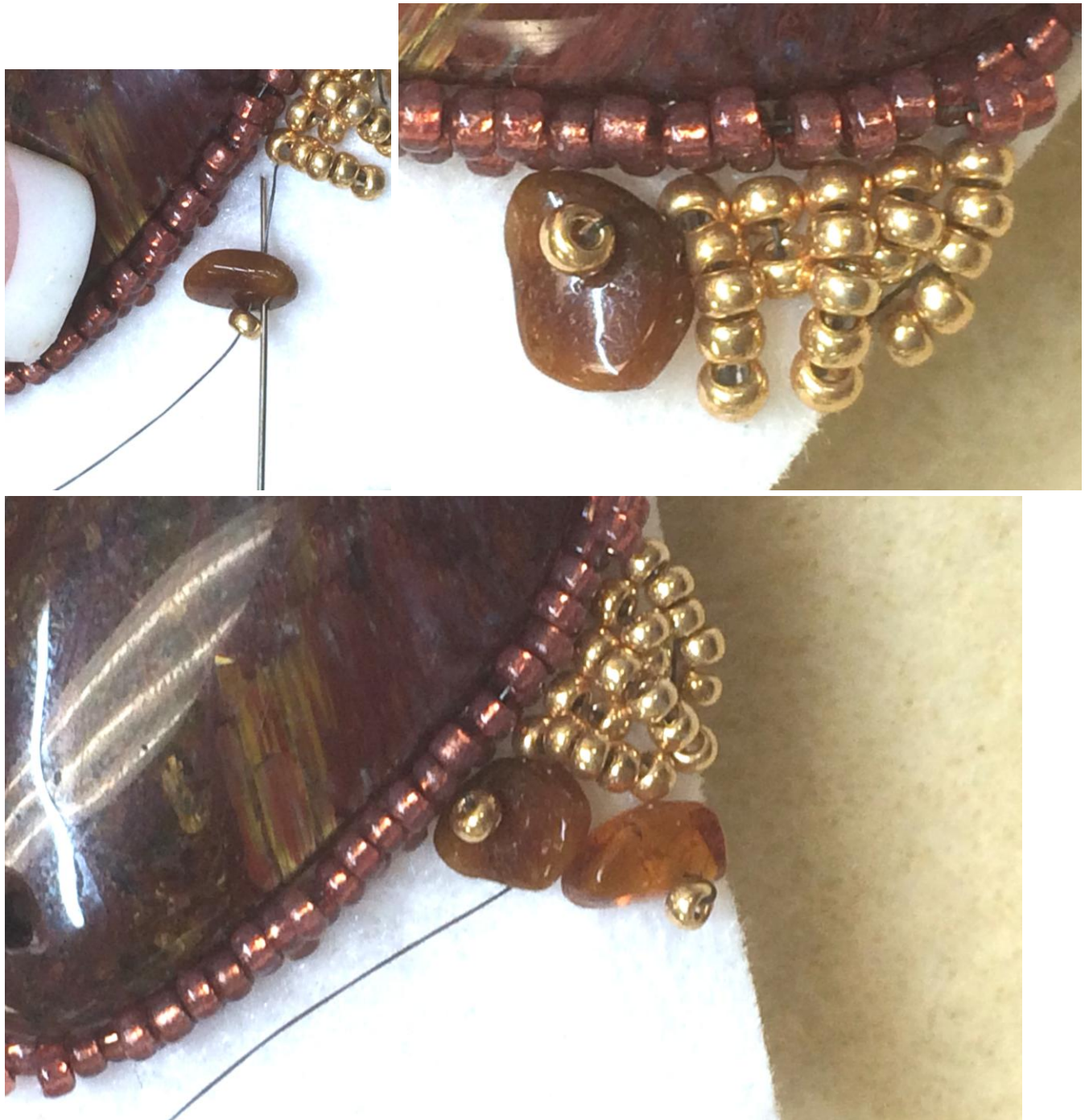
11. For the next row, add a bead in between the ones in the previous row. Pull this “wall” of beads up around the cabochon as you go.



12. Repeat this process until the wall of beads closes around the top edge of the cabochon to hold it in.
13. Next start bead embroidery on the backing alone. This can be more free form. Sew along lines as you please to make your designs.



14. Add Texture to your design by adding different beads. Sew through a gemstone chip, an 11/0 seed bead then back down through the chip to cause the flat side to lay down against the backing.



15. Whip stitch around the ring to hold it in place.



16. Lay your backing on top of your ultrasuede. Sew a long basting stitch to connect the two pieces together. **You would usually do this AFTER you sew all the beads you want on the top.** We are doing this at this point in the tutorial to show you how to finish your pieces.



17. To create a picot stitch around the edge, add on 3 size 11/0 seed beads.



18. Run your thread around the edge of the connected suede & backing. Sew back up through the ultrasuede and the backing running your needle through the last bead on the end. This makes 1 triangle shape with the 3 beads.



19. Add 2 more size 11/0 beads. Because you are using the last bead from the three before, you will make a triangle again. Sew around the top and up through the suede & backing.



20. Repeat until you have an edge around your pendant.

