



Turquoise Sunrise Bracelet

A Tutorial by Susan Elisabeth Thomas

For



©2016

Supplies

1mm Leather
22g Matte Turquoise Artistic Wire
Small Button
Assorted 6-7mm Czech Glass Beads
Two Large Accent Beads
2 Three to One Connectors
8mm Open Jump Ring

Tools

Round Nose Plier
Chain Nose Plier
Flush Cutter
Glue

Step 1 – Choose Your color palette. This design works best with colors that blend and contrast with the matte turquoise Artistic Wire.



Step 2 – Make sure you have plenty of 22 gauge wire. This design will take about 6-8 feet of wire.



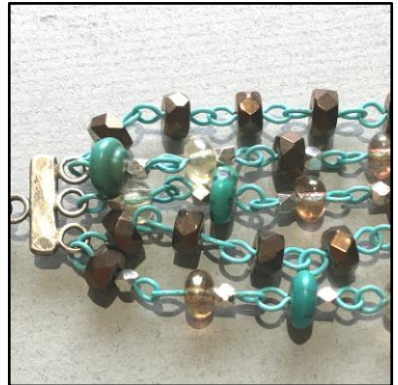
Step 3 –Using the 22 gauge artistic wire, make rosary connectors with each bead.



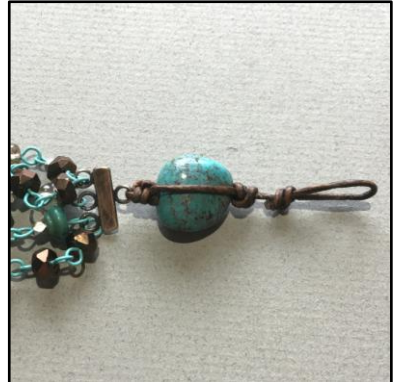
Step 4 – Make 5 equal length chains out of your rosary connectors. You can lengthen or shorten this depending on wrist size. Average length is 4 inches.



Step 5 – Attach all five chains to 3-1 connectors on both sides. Attach one chain to the center ring and 2 chains to each outside ring as shown.



Step 6 – Fold an 18 inch piece of 1mm leather in half. Thread through 3-1 connector. Tie 3 overhand knots. String large accent bead on one end of leather. Wrap the remaining piece of leather over the bead and tie three over hand knots around the piece strung through the bead. Trim excess from this piece, leaving the cord that was strung through the bead.



Step 7 – Fold over the remaining leather and make a loop that will fit your button! Trim excess.



Step 8 – Repeat step 6 and 7 except instead of a loop, attach a button to the end of the leather. Tie off and trim excess leather. ** Tip: Use a little glue to secure your knots. **



Step 9 – Make a leather tassel. Wrap 1mm leather around a card, dowel or tassel maker 4-5 times. Attach an 8mm jump ring to one side as shown.



Step 10 – Wrap a piece of the matte turquoise 22 gauge wire around the leather 5-6 times as shown.



Step 11 – Trim tassel to length and attach near button using the 8mm jump ring.

