

Twist & Shout Bracelet by Sara Ellis

Materials:

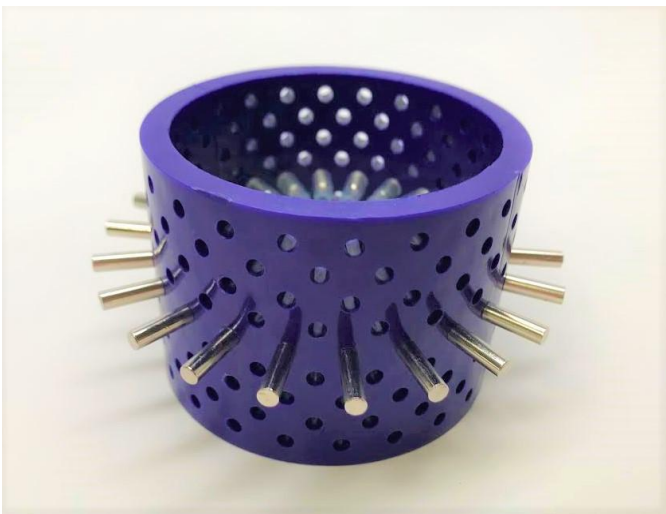
- 36" 16 gauge Non Tarnish Brass Artistic Wire
- 16 gauge Non Tarnish Brass Large Crimp Connector
- 20 Silver Tone Head Pins

Tools:

- 3D Bracelet Jig
- Extra Pegs – 5 5mm, 5 4mm
- Crimper Tool
- Cutter Tool
- Bent Chain Nose Pliers

Beads:

- 10 8mm Rondelle Beads
- 10 6mm Rondelle Beads



Instructions:

1. Place 20 3mm pegs, included with the 3D Bracelet Jig around the jig in a straight line along the middle row.

2. When all the pegs have been placed, there should be 2 empty holes between the first and last peg.



3. Step down a row and place a 5mm peg so that it's position creates a triangle of pegs with the 2 pegs in the row above it.

4. Continuing in the same row, skip a hole and place a 4mm peg in the jig.

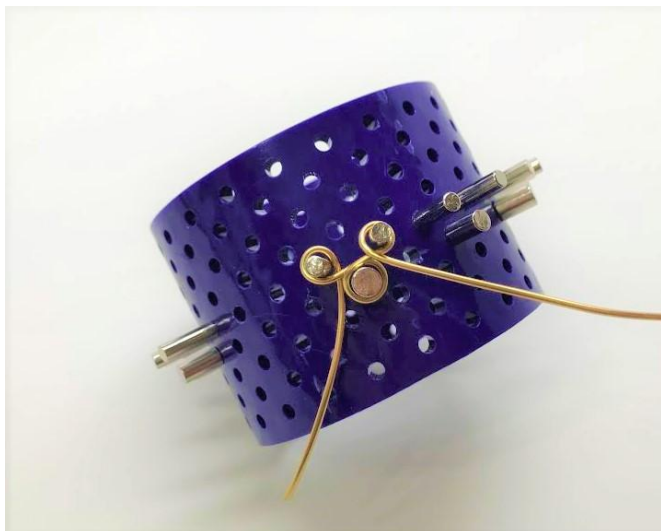


5. Repeat this pattern, alternating 5mm and 4mm pegs with one hole between each until all 10 of the pegs have been placed in the row.

6. Place the 16 gauge wire so that it is positioned on the inside of the first peg, leaving a 2 in tail. Wrap the wire around the first peg in a counter-clockwise direction.



7. Wrap the wire clockwise around the second peg and counter-clockwise around the third peg.





8. Continue wrapping in this pattern – counter-clockwise, clockwise, counter-clockwise, wrapping the wire around the pegs in groups of three until you have made it around the entire jig.

9. When you have finished wrapping around the peg, trim the end of the wire, leaving a two inch tail.

10. Carefully remove the design from the jig by removing all the pegs.



11. Using the cutter tool, trim the tails of the wires leaving $\frac{1}{4}$ inch of wire on each end.





12. Insert one of the tail wires into the large crimp connector, measuring $\frac{1}{2}$ of the distance of the connector. Use the tooth part of the crimping pliers to gently crimp the crimp connector into place.

13. Insert the other end of the wire into the crimp connector. Repeat the previous step, gently crimping the crimp connector into place with the crimper tool.



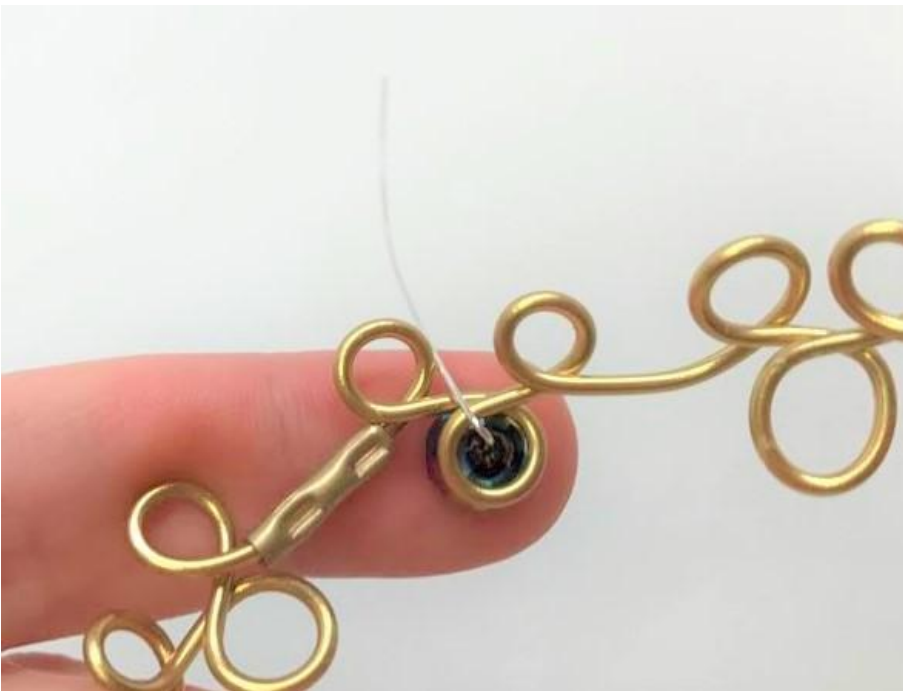
14. Thread an 8mm rondelle bead onto a head pin.



15. Thread the headpin through the first 4mm loop on your bangle bracelet, starting from the crimp connector.



16. Holding the bead up against the loop bend the head pin 90 degrees.



17. Wrap the headpin around the straight portion of the bracelet directly following the loop. Make three or four tight loops and trim the tail with the cutter tool.





18. Repeat Steps 14-17, adding 8mm rondelles to each of the 4mm and 5mm loops around the bangle bracelet.

19. Thread a 6mm rondelle bead onto a headpin.

20. Thread the headpin through the second 3mm loop on the bangle bracelet, starting from the crimp connector.

21. Repeat Steps 16 and 17, adding 6mm rondelle beads to every other 3mm loop of the bracelet until you have added all of the 6mm rondelles to the bracelet.

