

Vertical Netted Collar

by Ann Page

This collar is stitched using vertical netting, with the rows worked North and South rather than East and West.

This tutorial can be a lesson in design. It can work with many different combinations of 4mm, 6mm, 8mm rounds or shapes. The drape at the bottom can incorporate daggers, spikes, gemstone sticks or any arrangement of beads.

Spacing of the vertical rows allows the curve of the collar.

This tutorial uses specific beads to allow for this curve.



INGREDIENTS:

- A-** 8MM or the larger of the rounds in the kit.
(Bottom bridge bead)
- B-** 11/0 seed beads (Connectors and top bridge beads)
- C-** 8/0 seed beads. (Connectors and top bridge beads)
- D-** 6mm or smaller of the rounds in the kit (Top row of beads)
- E-** 50 daggers beads (Center of the drape)

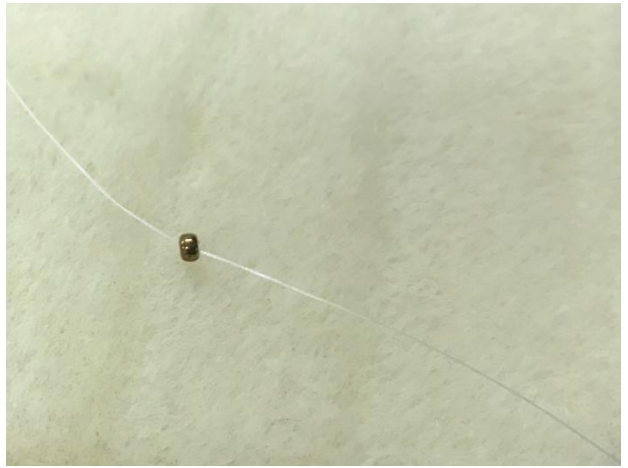


START

Leaving a 6 inch tail, pick up a **stop bead B** (going back through the same bead). It will be used in the design, not removed at the end.

Pick up an **A, 3B, 3C, 3B, 1D, 3B, 3C, 3B.**

Go down through the **A** that started this chain. (And go through the stop bead at this time but not on the repeats)



****TIO:** It is best to let the work rest on the work mat rather than hold it in the hands.



REPEATS:

1) Pick up **3B, 1C, 1E, 1C, 3B 1A, 3B, 2C.** Go back through the top C and 2B (These are the upper bridge beads).



Reminder:

- A**-8MM (Bottom bridge bead)
- B**-11/0 (Connectors & top bridge beads)
- C**-8/0 (Connectors & top bridge beads)
- D**-6mm (Top row of beads)
- E**-Dagger beads (Center of the drape)



2) Pick up **1B, 1D, 3B, 3C, 3B.**

Go down through the **A** from step one.



Repeat these 2 steps for a total of 40 units, ending by going up through the top bridge.

Reminder:

A-8MM (Bottom bridge bead)

B-11/0 (Connectors & top bridge beads)

C-8/0 (Connectors & top bridge beads)

D-6mm (Top row of beads)

E-Dagger beads (Center of the drape)





CLASP

ADD **1C**, **5B**, the toggle, **5B**, back through the **C**, the **B** and **D** last added.



Working back to beginning, add **1C** between the **2B** on the top row, then through the **D** and **B** of the next set.

Once you make it back to the beginning, repeat this segment to add in the other side of the clasp. Reinforce this loop.

Tie off thread and work tail in.



Reminder:

- A**-8MM (Bottom bridge bead)
- B**-11/0 (Connectors & top bridge beads)
- C**-8/0 (Connectors & top bridge beads)
- D**-6mm (Top row of beads)
- E**-Dagger beads (Center of the drape)

